

Cee® 300X

Heavy-Duty-Drive Spin Coater

The Cee® 300X heavy-duty-drive spin coater combines an intuitive Windows®-based operating system, extremely accurate spin speed control, and a high horsepower drive for aggressive acceleration. These features combine to ensure the elimination of process variables for a large array of process chemicals and applications. The 300X has a state-of-the-art user interface and has been designed specifically for 300-mm and larger LCD squares up to 14" × 14".



Cost Effective Equipment

Serving the Semiconductor Industry Since 1987

Benefits

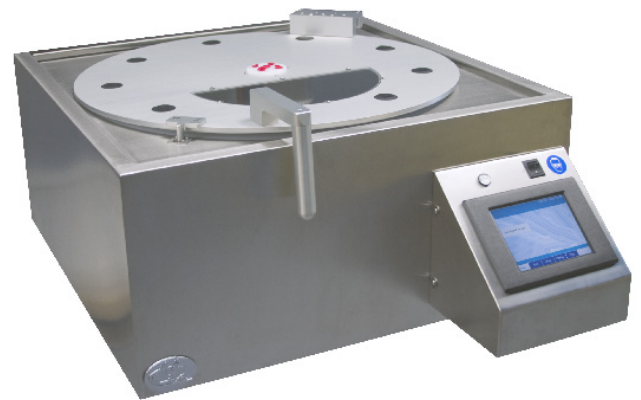
- ▶ Onboard Windows®-based PC control for enhanced interface capabilities and connectivity
- ▶ Enhanced lid-lift assist feature (gas spring opens $\geq 45^\circ$)
- ▶ New compact design for minimized footprint
- ▶ Full-color, 7-inch touch screen display
- ▶ Drive system (indirect) with highest horsepower in its class
- ▶ Compatible with stand alone exhausted cabinet (chemical storage)
- ▶ Optional X-PRO workstation integrates stand-alone cabinet with an upper exhaust enclosure for creating a mini-environment (monitors and logs data on ambient conditions)

Dimensions

- ▶ Machine weight: ~115 lb (52.2 kg)
- ▶ Shipping weight: ~250 lb (113.4 kg)
- ▶ Cabinet dimensions: 27.75 in (70.5 cm) W × 34.75 in (88.3 cm) L × 20.25 in (51.5 cm) H

Programmability

- ▶ PC-controlled
- ▶ Touch screen interface and display
- ▶ 250,000 process recipe programs on board
- ▶ A virtually unlimited number of user-defined recipe program steps
- ▶ 0.1-second resolution for step times (9,999.9 seconds maximum step time)
- ▶ Spin speed: 0 to 6,000 rpm (4,000 rpm and 3,000 rpm option available for additional acceleration capabilities)



Cee® 300X heavy-duty-drive spin coater

- ▶ Spin speed acceleration:
 - 0 to 30,000 rpm/s unloaded
 - 0 to 23,000 rpm/s 300-mm substrate
 - 0 to 3,000 rpm/s 350-mm × 6-mm round recessed spin chuck
 - 0 to 400 rpm/s 14" × 14" × 1.1-mm in photomask recessed chuck
- ▶ Connectivity: USB/Ethernet port for communications for uploading/downloading process parameters with offline firmware standard (offline recipe number and steps unlimited)
- ▶ System capable of controlling third-party host software for high-end IDI/Cybor/Mykrolis positive displacement pumps
- ▶ Capabilities to simultaneously trigger multiple (up to 16) automated dispense nozzles
- ▶ Bidirectional speed control/oscillating chuck
- ▶ Iteration software (recipe looping)
- ▶ Dispense or component outputs: 50
- ▶ Security: Password protection option available at no charge
- ▶ In-process dynamic speed acceleration control

Precision

- ▶ Spin speed repeatability: < 0.2 rpm
- ▶ Spin speed resolution: < 0.2 rpm
- ▶ Substrate sizes: < 1 cm to 450 mm round; 14" × 14" square

Reliability

- ▶ Indirect drive system protects the spin motor from contact with process chemicals and solvents
- ▶ Vacuum and lid interlock
- ▶ Industry-leading reliability and uptime
- ▶ 1-year full warranty on parts and labor
- ▶ Free remote technical support (phone, email, fax) for the life of the product
- ▶ Application process assistance for the life of the product

Bowl and Exhaust Hood Design

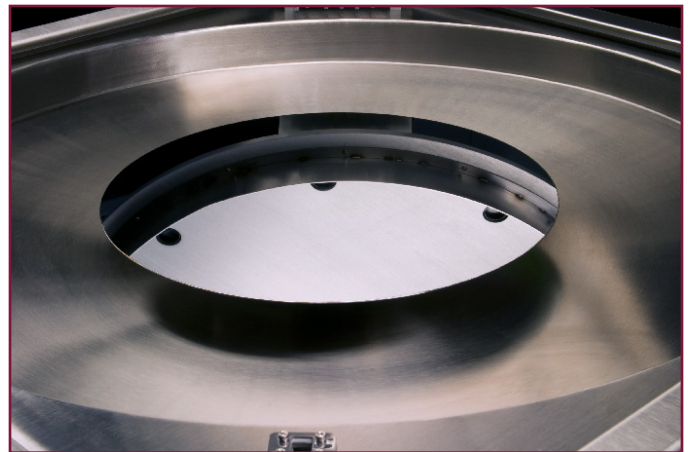
- ▶ All stainless steel construction
- ▶ Optional ETFE-coated spin bowl for material compatibility
- ▶ Optional Teflon®/polyethylene bowl (non-disposable bowl liner)
- ▶ Optional closed and open lid design for process flexibility
- ▶ Optional Teflon®/polyethylene splash ring
- ▶ Drain and exhaust ports located in the bottom of bowl
- ▶ Optional nitrogen purge for an inert spin environment

Utilities

- ▶ Power requirements: 200–240 VAC, 1350 watts, 7.0 amp
- ▶ Drain port: 1" OD
- ▶ Exhaust port: 1.5" OD
- ▶ Vacuum: 20–25 in Hg
- ▶ Exhaust: 20–50 cfm at 0.2 in water
- ▶ Nitrogen or CDA (for automated dispense): 70 psi



Cee® 300X spin bowl



Cee® 300X spin bowl with 300-mm wafer

©2019 Cost Effective Equipment, LLC. All statements, technical information and recommendations contained herein are based on tests we believe to be accurate, but the accuracy or completeness thereof is not guaranteed and the following is made in lieu of warranty expressed or implied. Neither the seller nor manufacturer shall be liable for any injury, loss or damage, direct or consequential, arising from the use or inability to use the product. Before using, user shall determine the suitability of the product for his intended use, and user assumes all risk and liability whatsoever in connection therewith. No statement or recommendation not contained herein shall have any force or effect unless in an agreement signed by officers of the seller and manufacturer.

Teflon® is a registered trademark of E.I. du Pont de Nemours and Company, Windows® is a registered trademark of Microsoft Corporation.

F. 6.6.7050.A3 Effective Date 06/15/2017