
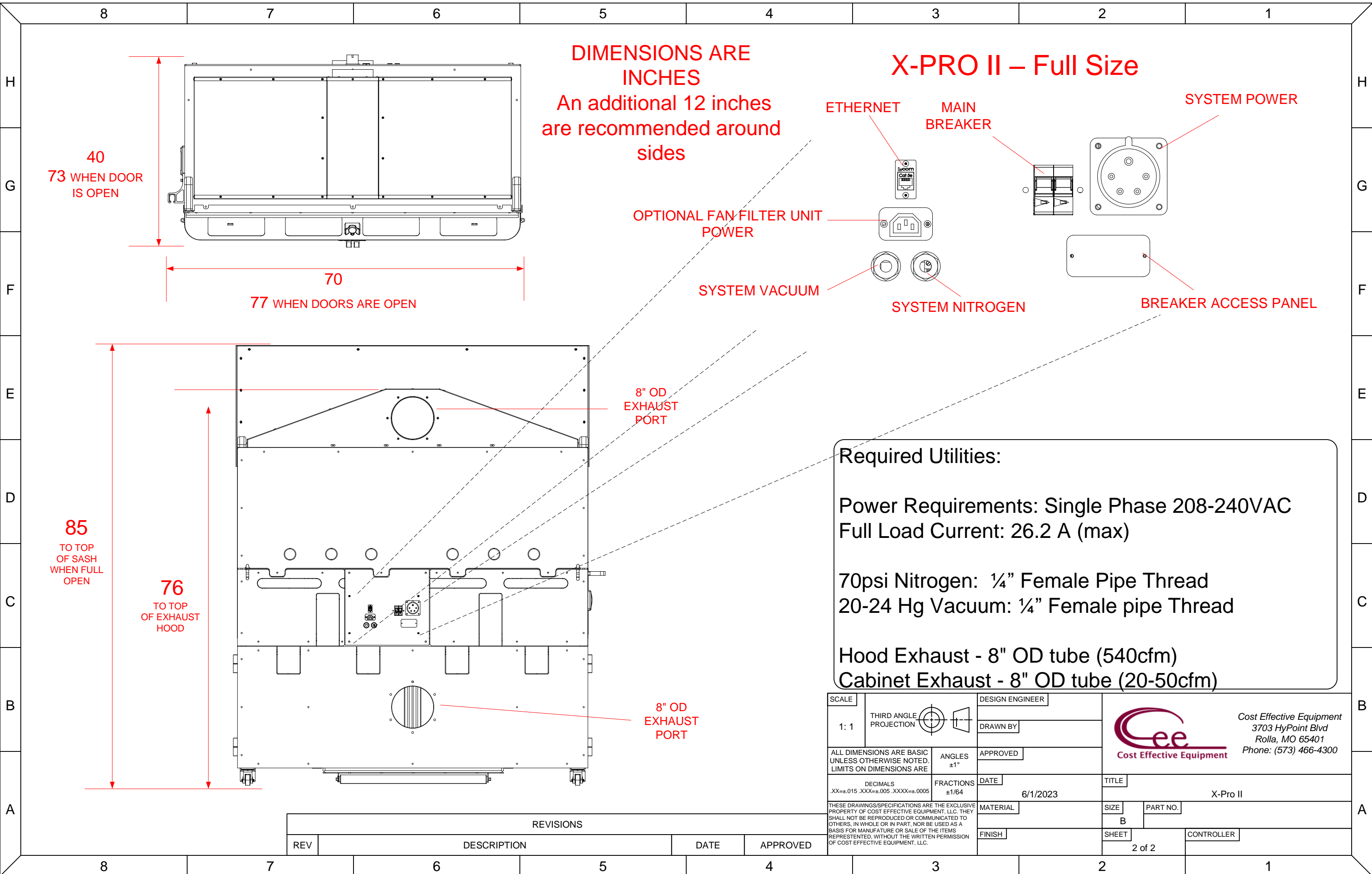


REVISIONS				
REV	DESCRIPTION	DATE	APPROVED	

SCALE 1:1	THIRD ANGLE PROJECTION	DESIGN ENGINEER	 Cost Effective Equipment 3703 HyPoint Blvd Rolla, MO 65401 Phone: (573) 466-4300
ALL DIMENSIONS ARE BASIC UNLESS OTHERWISE NOTED. LIMITS ON DIMENSIONS ARE DECIMALS .XX=±.015 .XXX=±.005 .XXXX=±.0005 FRACTIONS ±1/64		DRAWN BY	
THESE DRAWINGS/SPECIFICATIONS ARE THE EXCLUSIVE PROPERTY OF COST EFFECTIVE EQUIPMENT, LLC. THEY SHALL NOT BE REPRODUCED OR COMMUNICATED TO OTHERS, IN WHOLE OR IN PART, NOR BE USED AS A BASIS FOR MANUFACTURE OR SALE OF THE ITEMS REPRESENTED, WITHOUT THE WRITTEN PERMISSION OF COST EFFECTIVE EQUIPMENT, LLC.		APPROVED	TITLE X-Pro II
		DATE 6/1/2023	SIZE B
		MATERIAL	PART NO.
		FINISH	SHEET 1 of 2
			CONTROLLER



REVISIONS				
REV	DESCRIPTION	DATE	APPROVED	

SCALE 1:1	THIRD ANGLE PROJECTION	DESIGN ENGINEER	 Cost Effective Equipment 3703 HyPoint Blvd Rolla, MO 65401 Phone: (573) 466-4300
ALL DIMENSIONS ARE BASIC UNLESS OTHERWISE NOTED. LIMITS ON DIMENSIONS ARE DECIMALS .XX=±.015 .XXX=±.005 .XXXX=±.0005 FRACTIONS ±1/64		DRAWN BY	
THESE DRAWINGS/SPECIFICATIONS ARE THE EXCLUSIVE PROPERTY OF COST EFFECTIVE EQUIPMENT, LLC. THEY SHALL NOT BE REPRODUCED OR COMMUNICATED TO OTHERS, IN WHOLE OR IN PART, NOR BE USED AS A BASIS FOR MANUFACTURE OR SALE OF THE ITEMS REPRESENTED, WITHOUT THE WRITTEN PERMISSION OF COST EFFECTIVE EQUIPMENT, LLC.		APPROVED	TITLE X-Pro II
		DATE 6/1/2023	SIZE B
		MATERIAL	PART NO.
		FINISH	SHEET 2 of 2
			CONTROLLER