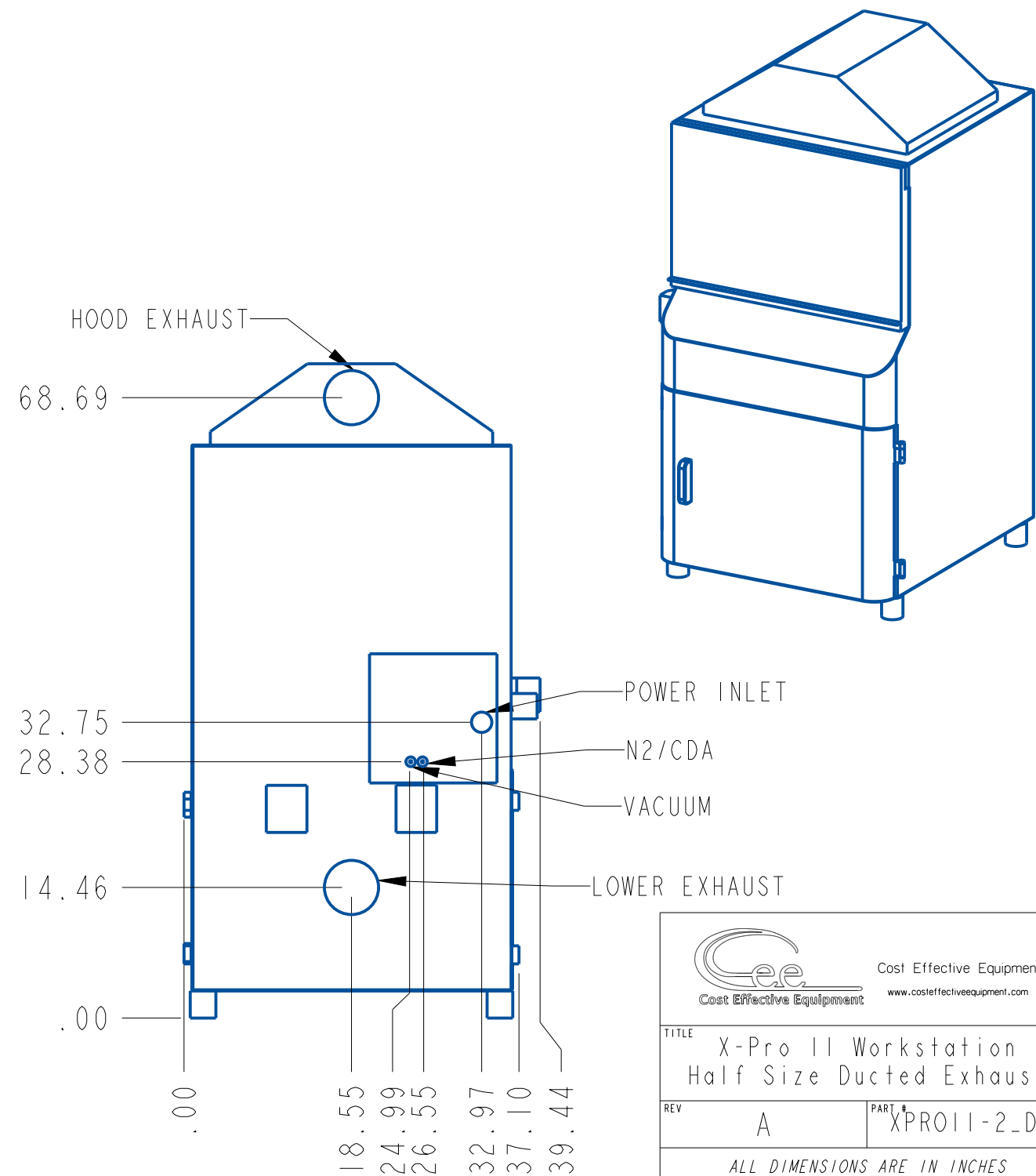
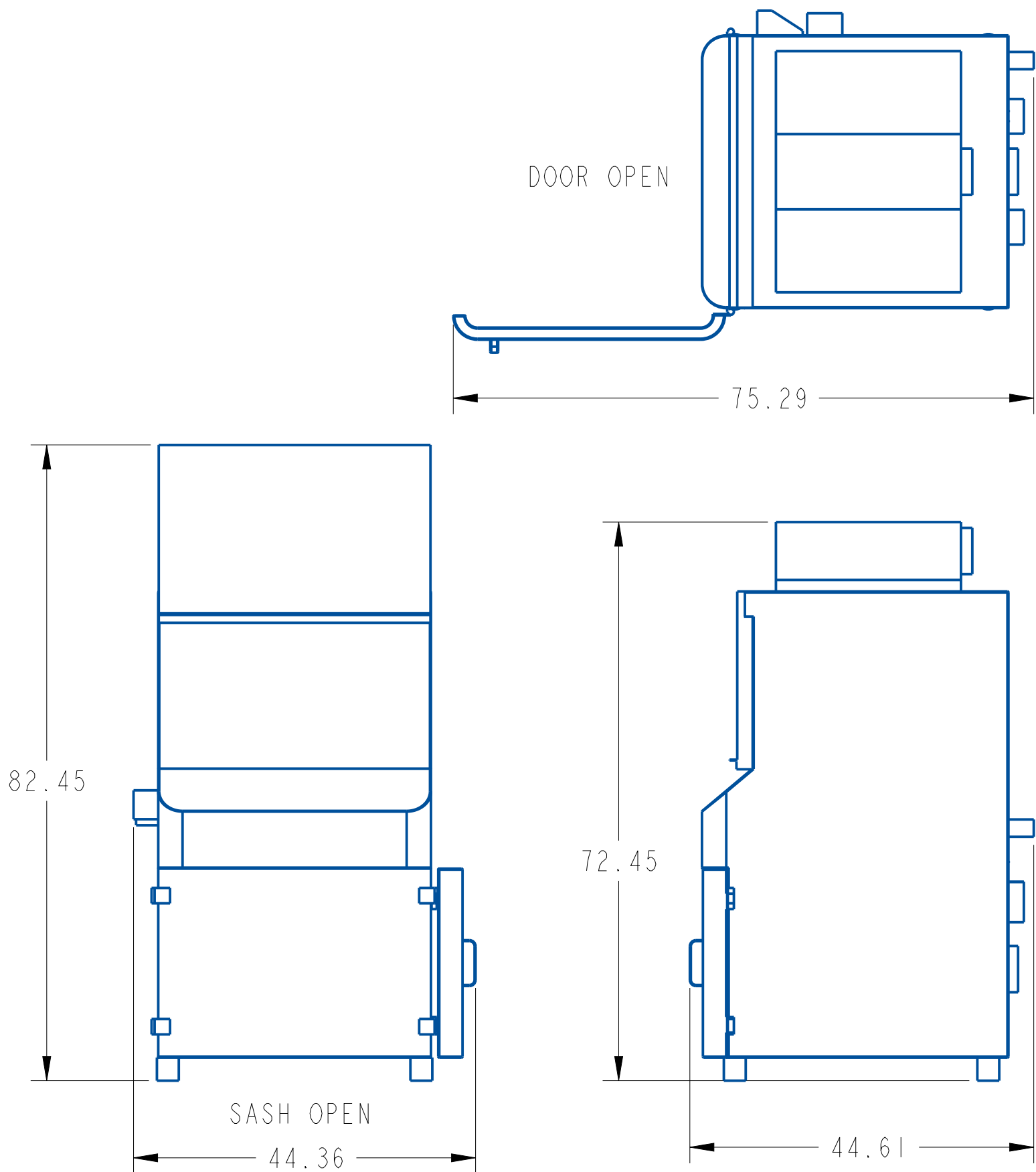



REQUIRED UTILITIES:  
ELECTRICAL: 208-230VAC 50/60 HZ SINGLE PHASE, 26.2A MAX  
VACUUM\*: 20" HG(33kPa) -1/4" PTC OR 1/4" FNPT  
          \*(NOT REQUIRED IF PURCHASED WITH VACCUM PUMPS)  
N2/CDA: 35 psi(241kPa)-1/4" PTC OR 1/4" FNPT  
HOOD EXHAUST: 6" OD-0.4" H2O @ 540CFM (100Pa @ 917CMH)  
CABINET EXHAUST: 6" OD-0.4" H2O @ 20CFM (100Pa @ 34CMH)  
NOTE: EACH MODULE WILL HAVE ITS OWN EXHAUST REQUIREMENTS



 Cost Effective Equipment		Cost Effective Equipment <a href="http://www.costeffectiveequipment.com">www.costeffectiveequipment.com</a>	
TITLE X-Pro II Workstation Half Size Ducted Exhaust			
REV A		PART # XPROII-2-DE	
ALL DIMENSIONS ARE IN INCHES			