

REQUIRED UTILITIES:

ELECTRICAL: 208-230VAC 50/60 HZ SINGLE PHASE, 26.2A MAX

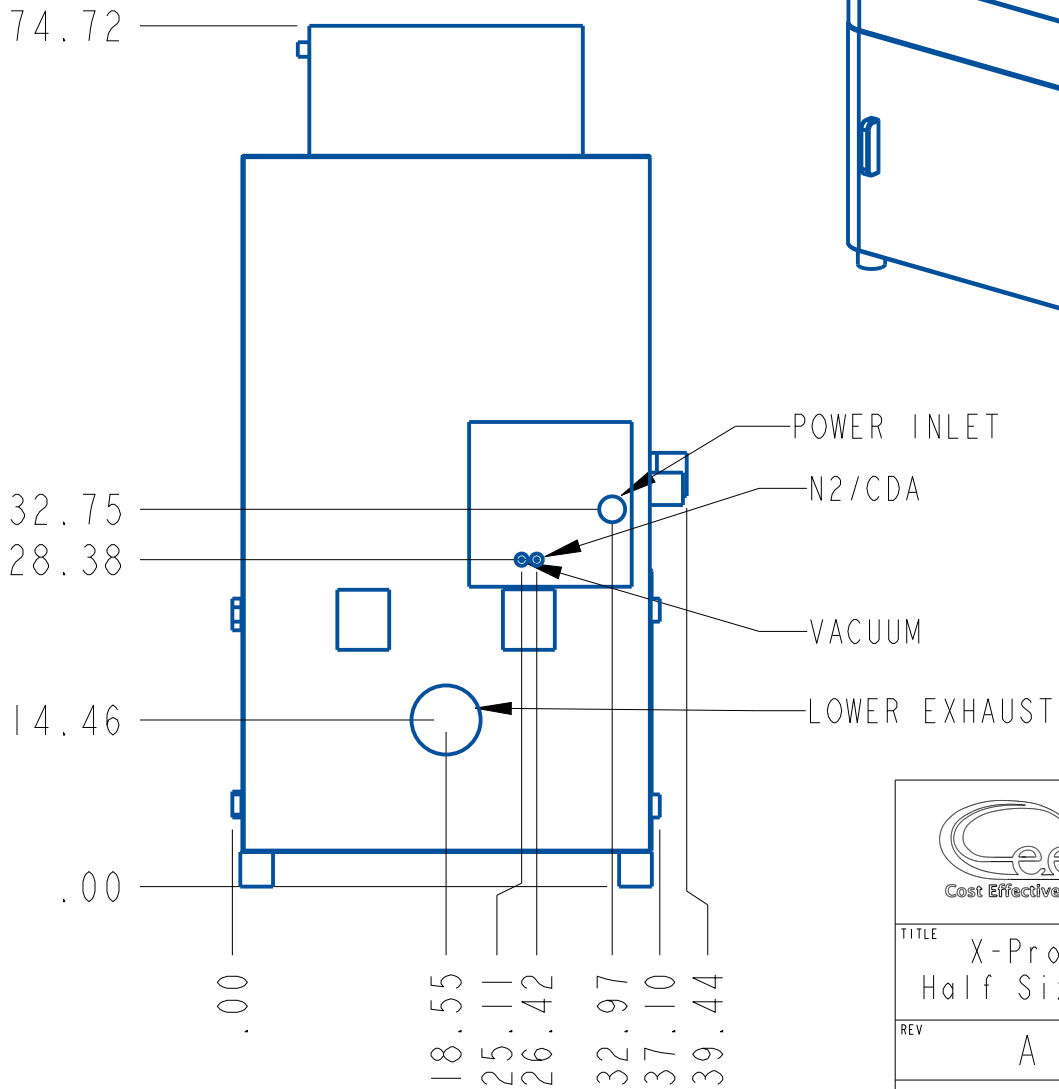
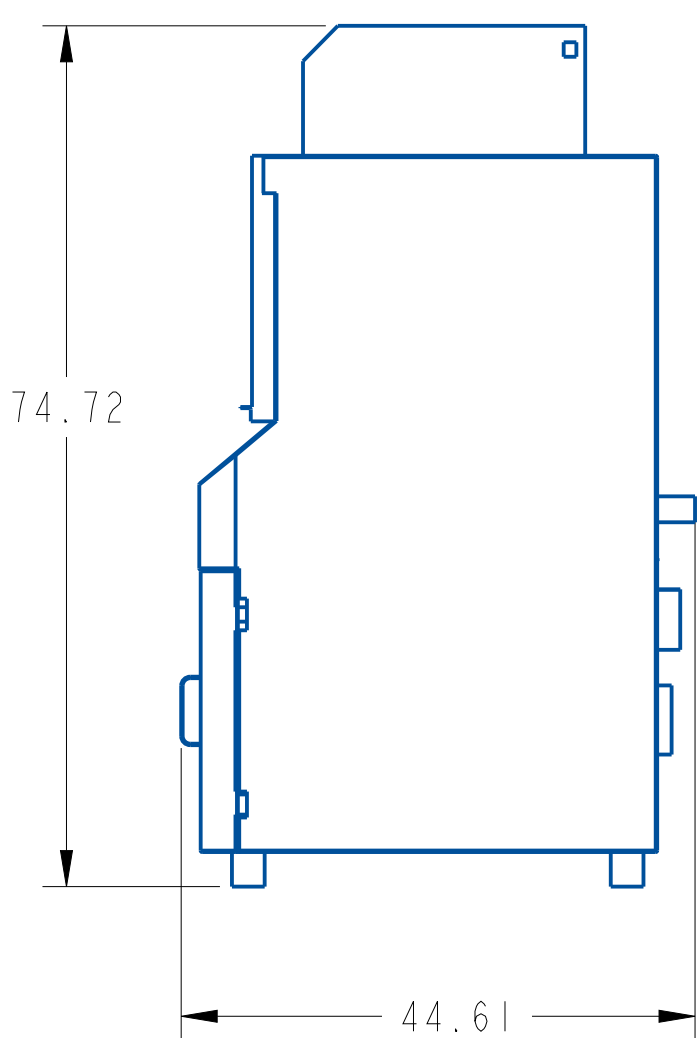
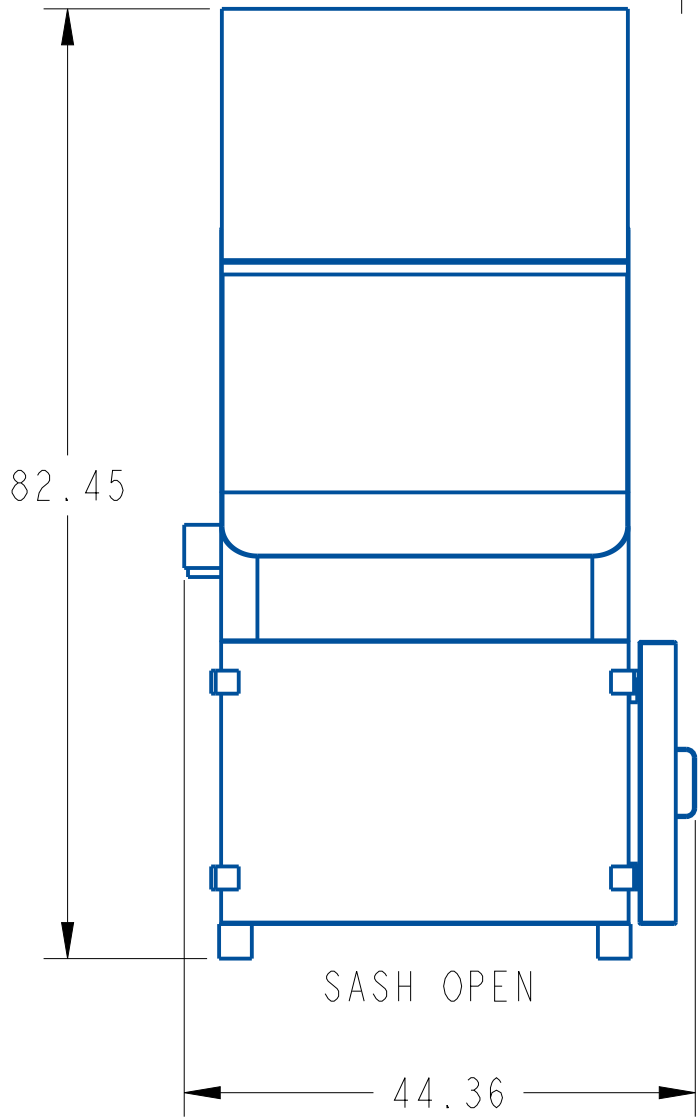
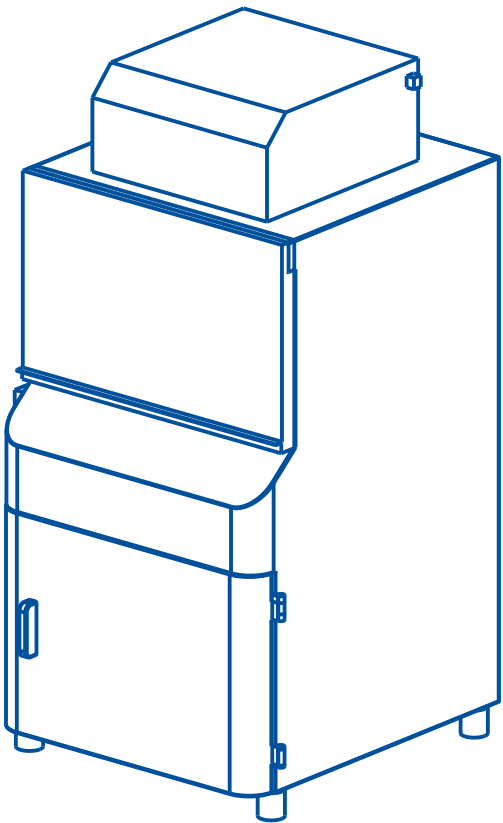
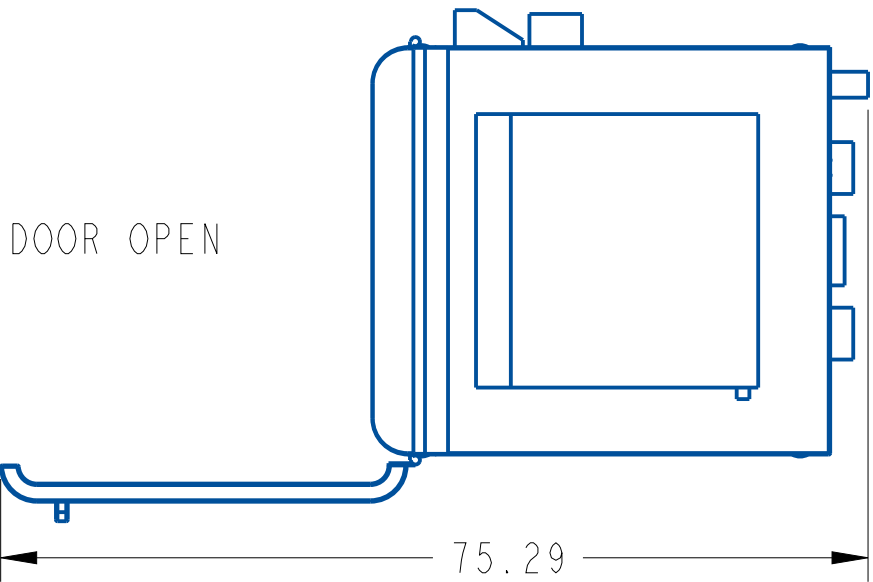
VACUUM*: 20" HG(33kPa) -1/4" PTC OR 1/4" FNPT


*(NOT REQUIRED IF PURCHASED WITH VACCUM PUMPS)

N2/CDA: 35 psi(241kPa)-1/4" PTC OR 1/4" FNPT

CABINET EXHAUST: 6" OD-0.4" H2O @ 20CFM (100Pa @ 34CMH)

NOTE: EACH MODULE WILL HAVE ITS OWN EXHAUST REQUIREMENTS



 Cost Effective Equipment		Cost Effective Equipment www.costeffectiveequipment.com	
TITLE X-Pro II Workstation Half Size Ductless Recirc			
REV A		PART # XPROII-2-DR	
ALL DIMENSIONS ARE IN INCHES			