

# REQUIRED UTILITIES:

ELECTRICAL: 208-230VAC 50/60 HZ SINGLE PHASE, 26.2A MAX

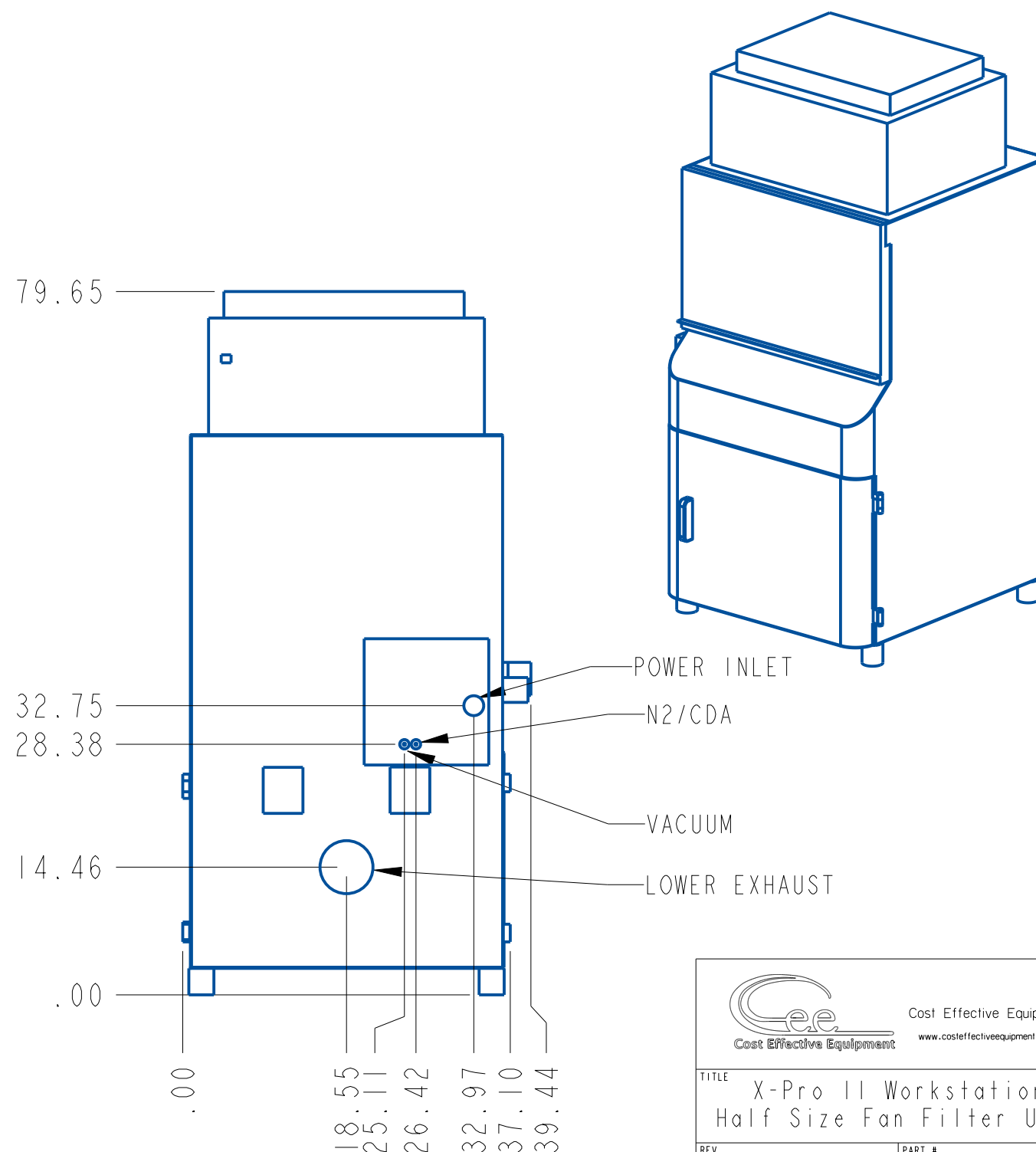
VACUUM\*: 20" HG(33kPa) -1/4" PTC OR 1/4" FNPT


*\*(NOT REQUIRED IF PURCHASED WITH VACCUM PUMPS)*

N2/CDA: 35 psi(241kPa)-1/4" PTC OR 1/4" FNPT

CABINET EXHAUST: 6" OD-0.4" H2O @ 20CFM (100Pa @ 34CMH)

*NOTE: EACH MODULE WILL HAVE ITS OWN EXHAUST REQUIREMENTS*



		Cost Effective Equipment www.costeffectiveequipment.com
TITLE	X-Pro II Workstation Half Size Fan Filter Unit	
REV	A	PART # XPRO11-2-FFU
ALL DIMENSIONS ARE IN INCHES		