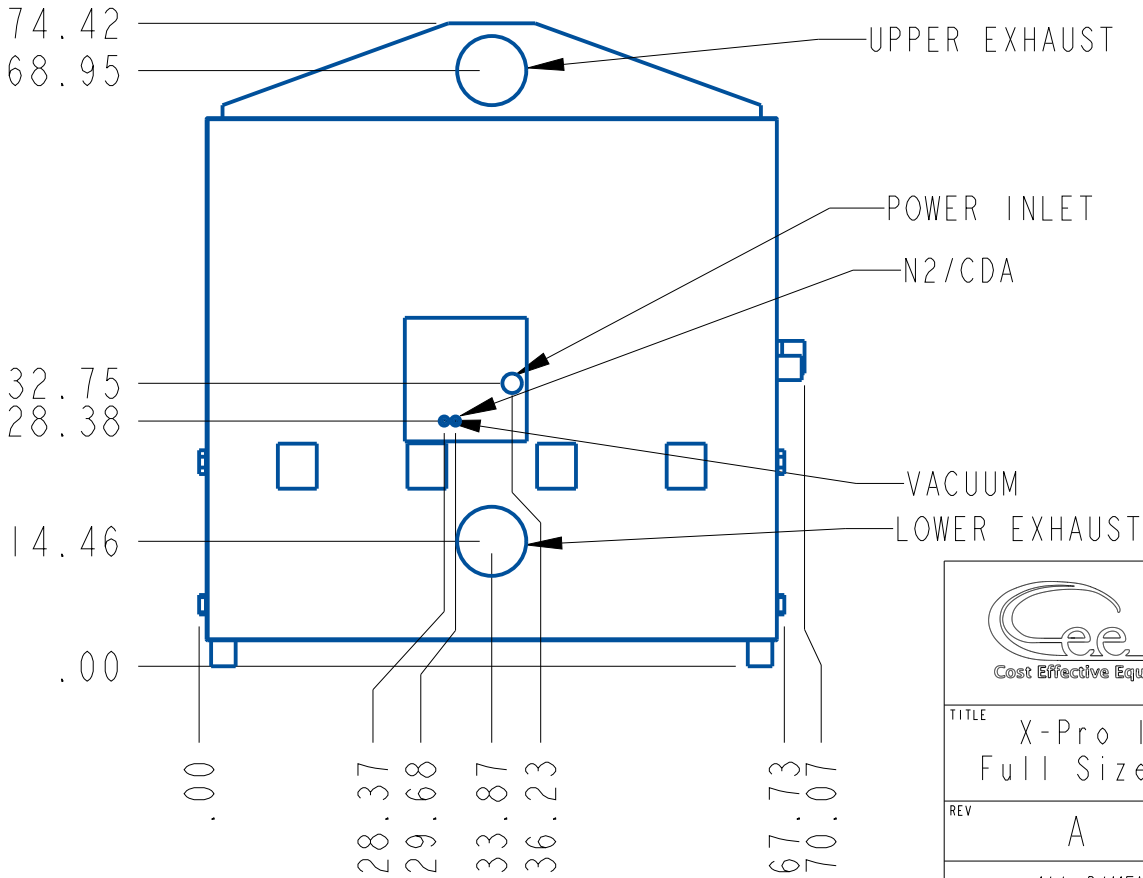
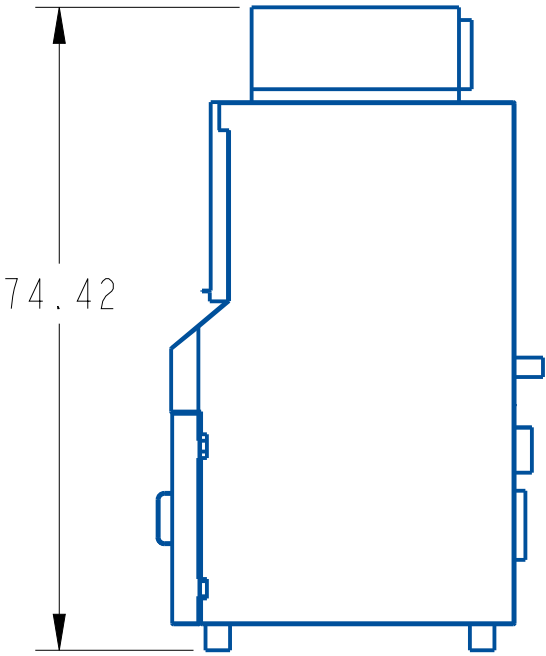
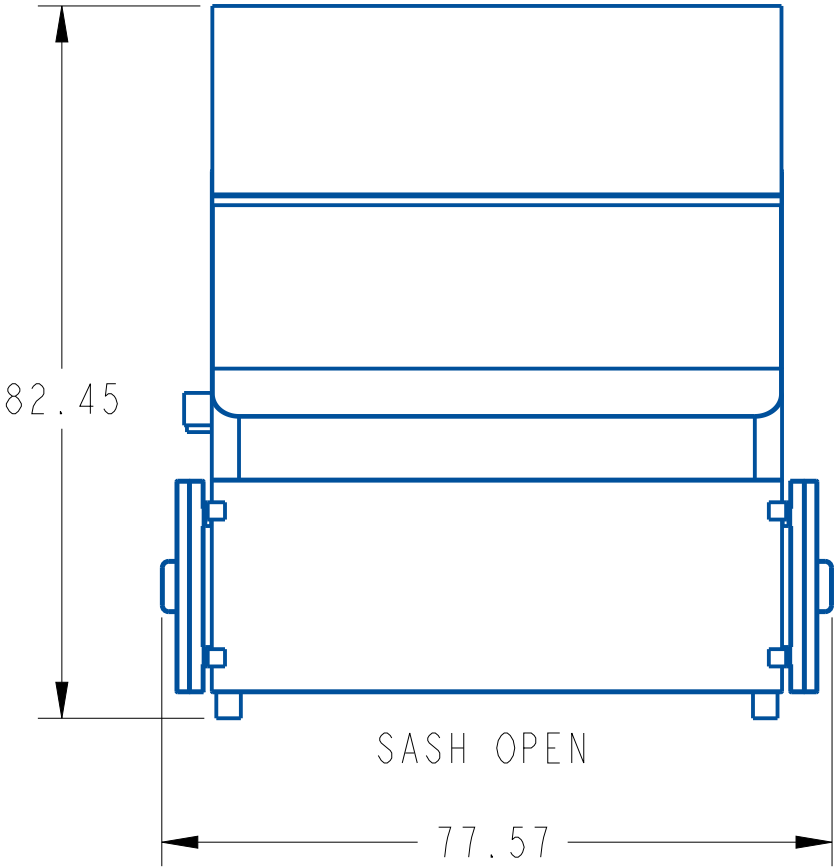
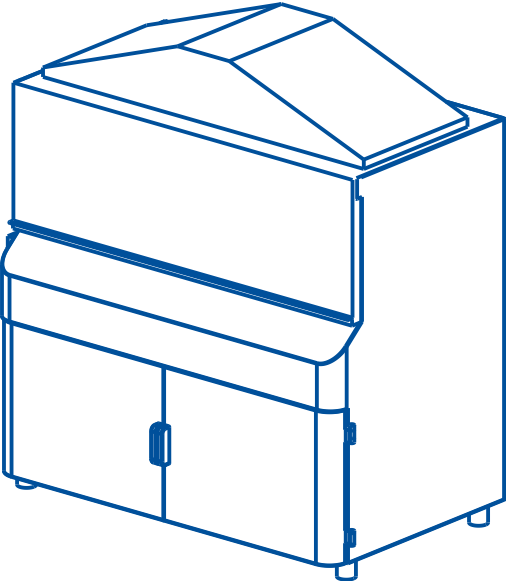
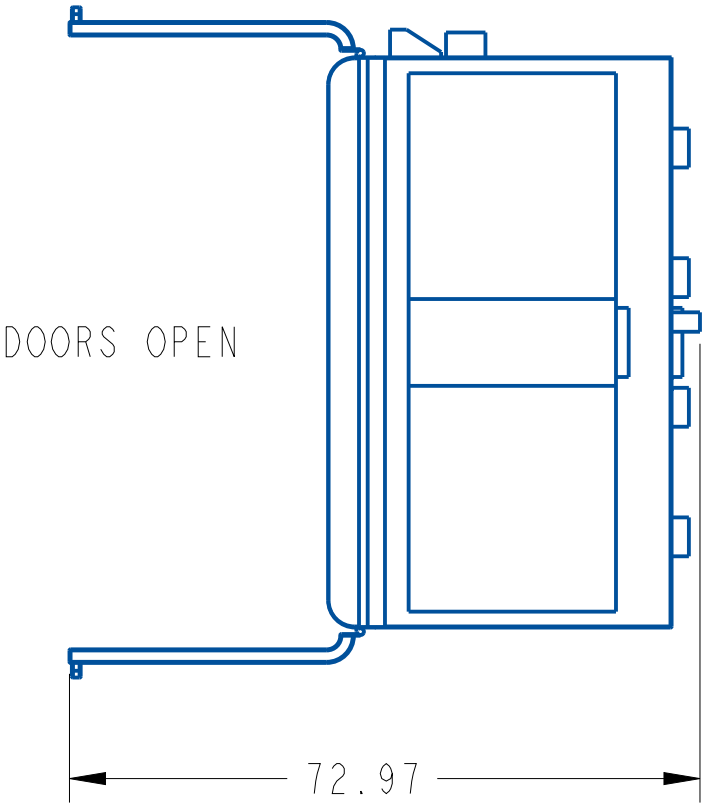



REQUIRED UTILITIES:
ELECTRICAL: 208-230VAC 50/60 HZ SINGLE PHASE, 26.2A MAX
VACUUM*: 20" HG(33kPa) -1/4" PTC OR 1/4" FNPT
 *(NOT REQUIRED IF PURCHASED WITH VACCUM PUMPS)
N2/CDA: 35 psi(241kPa)-1/4" PTC OR 1/4" FNPT
HOOD EXHAUST: 8" OD-0.4" H2O @ 540CFM (100Pa @ 917CMH)
CABINET EXHAUST: 8" OD-0.4" H2O @ 20CFM (100Pa @ 34CMH)
NOTE: EACH MODULE WILL HAVE ITS OWN EXHAUST REQUIREMENTS



 Cost Effective Equipment www.costeffectiveequipment.com	
TITLE X-Pro II Workstation Full Size Ducted Exhaust	
REV A	PART # XPROII-4-DE
ALL DIMENSIONS ARE IN INCHES	